



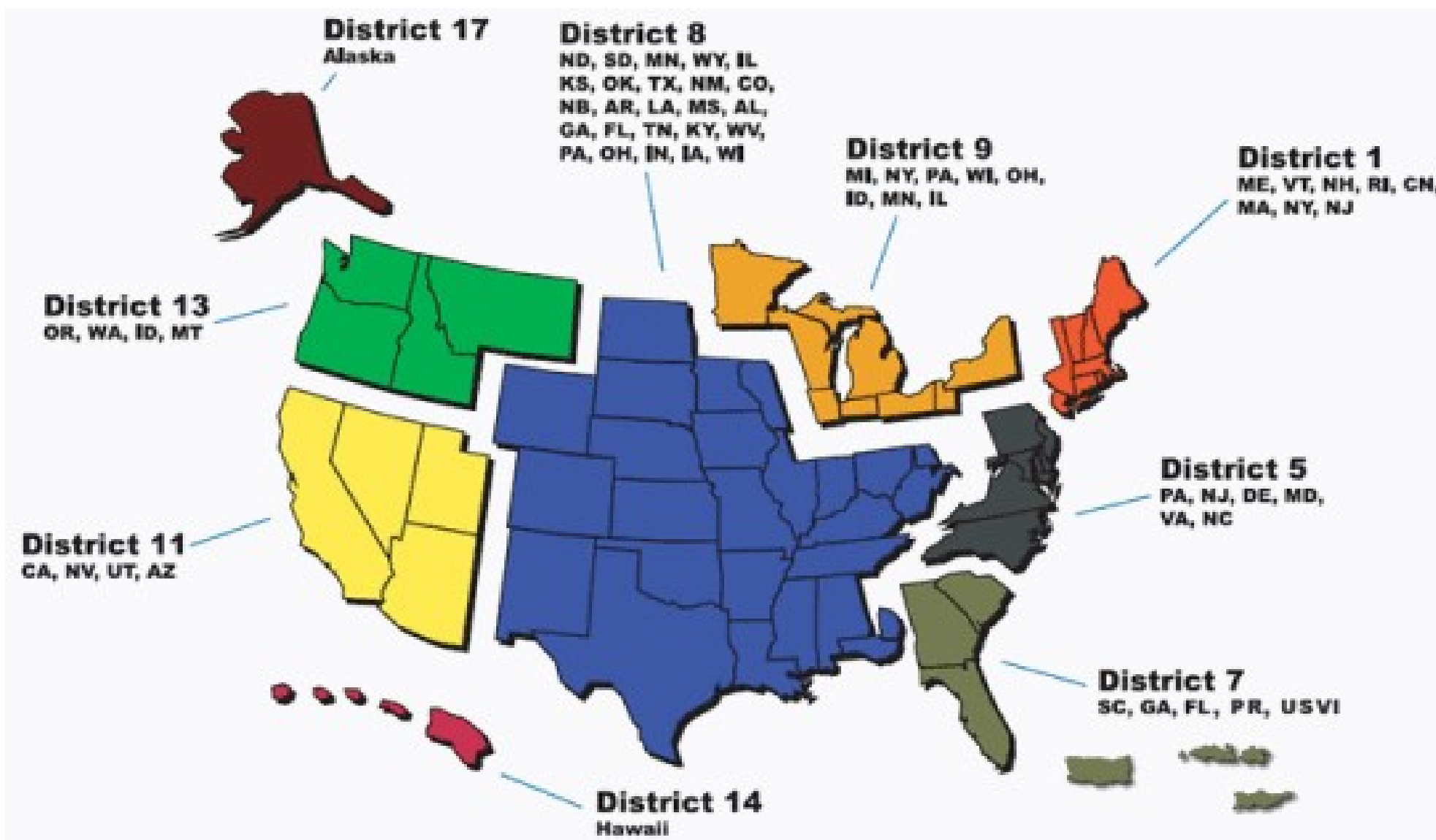
UNITED STATES COAST GUARD SECTOR NORTH CAROLINA



CAPT Timothy List
Captain of the Port

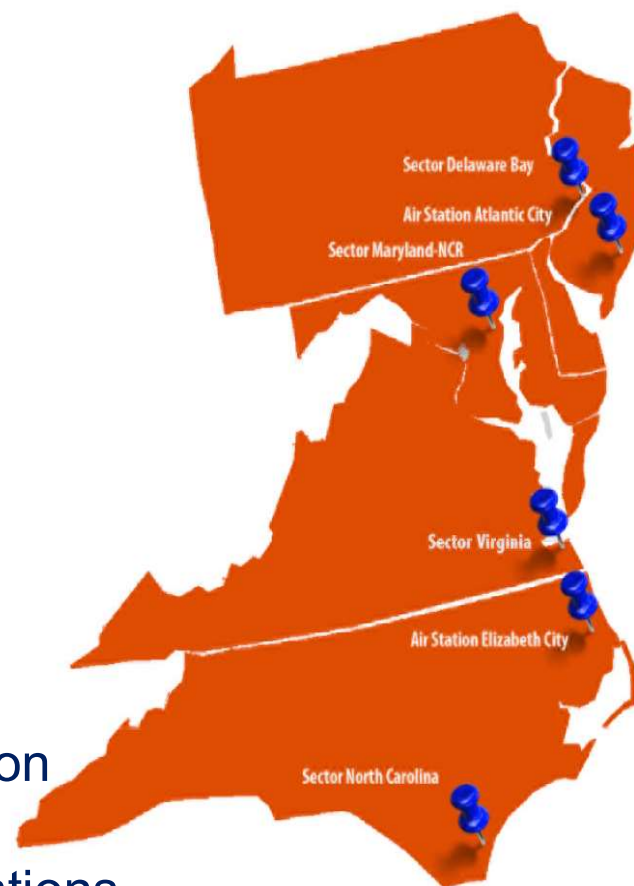


District Five





D5 Major Commands



- 4 Sectors
- 2 Air Stations
- 11 Aid to Navigation Cutters
- 8 Patrol Boats
- 4 Fast Response Cutters
- 11 Aid to Navigation Teams
- 27 Small Boat Stations
- 7,400 Active-Duty, Reserve, Civilian, and Auxiliary personnel



D5 By the Numbers



Annually, District 5 performs:

Safety

- 2,882 SAR cases
- 390 lives saved
- 2,235 lives assisted
- \$53.5M property assisted/saved
- 4,916 vessel inspections



Security

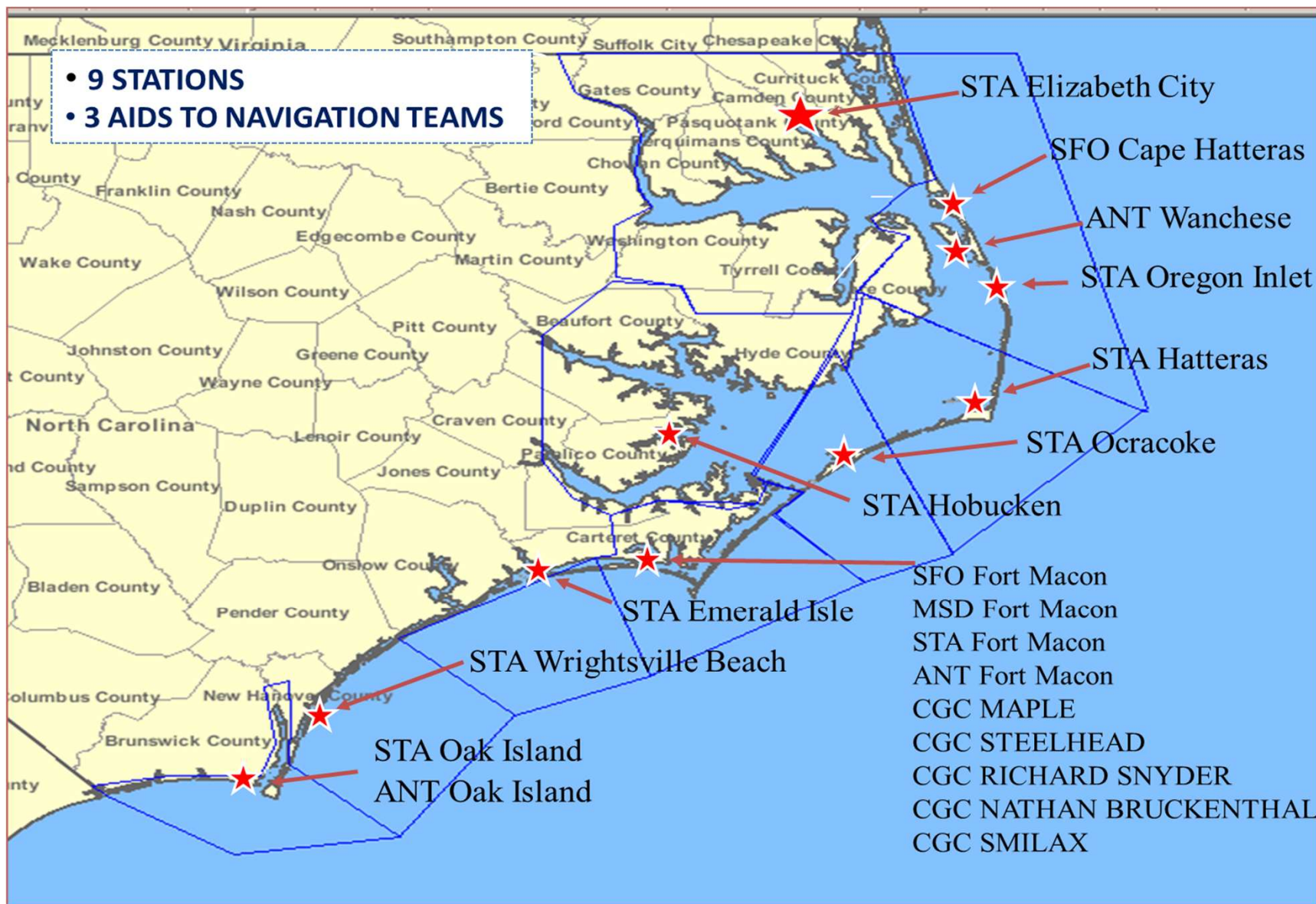
- 193 enforcement actions
- 1,072 facility inspections
- 7,979 ATON maintained

Stewardship

- 80+ pollution responses



Sector North Carolina





Sector North Carolina's Role





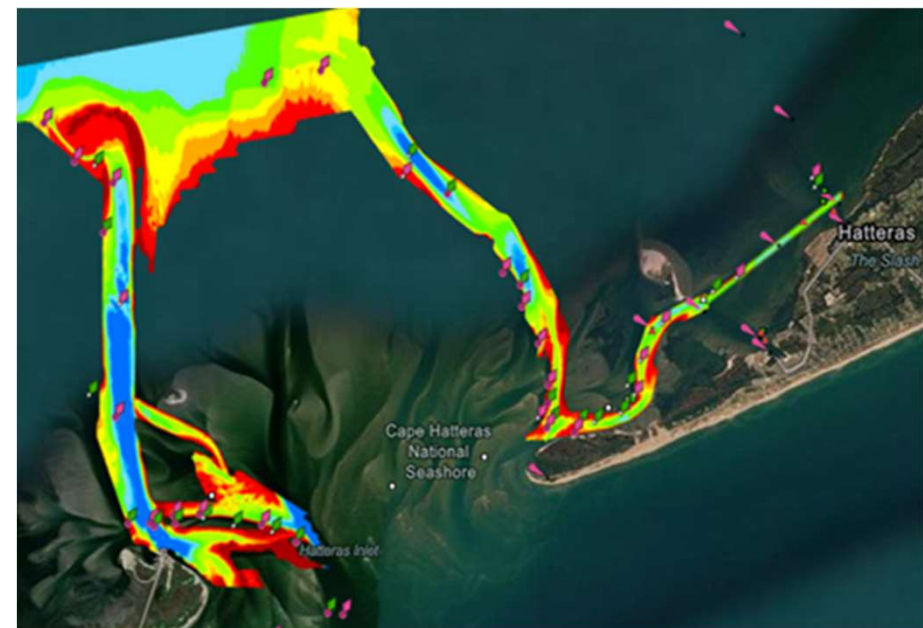
Waterways Management

Assets

- 3 Aids to Navigation Teams (Maintenance)
- CGC SMILAX (Pilings)
- CGC MAPLE (Offshore/Major Aids)

Challenges

- Constant shoaling / shifts
- Determining good water around shallow water inlets
- Crew shortages / funding





Supporting Waterways Projects



Projects

- Dredging, marine events, bridge maintenance, DoD movements, etc.

Discussions

- Key stakeholders evaluate waterway impacts, concerns, & logistics

Actions

- Waterway closures, Safety/Security Zones
- Temporary aids, remarking, removals
- Cutter/Station/Aux support, PATCOMs
- Vessel inspections, worksite determinations
- Radio broadcasts, publish bulletins



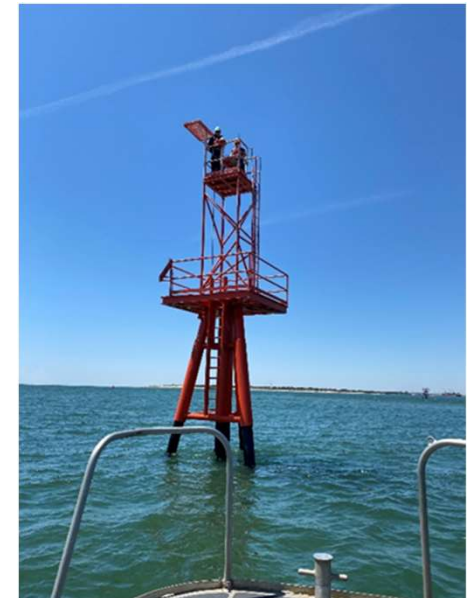
Hurricanes & Heavy Weather

Waterway Closure

- Gale force winds
 - Frying Pan Shoals
 - Beaufort Inlet Channel Sea Buoy
- Stakeholder discussions
- PORTCONs

Reconstitution

- Shoaling
- Debris
- ATON Verification





Sector North Carolina

24/7 Command Center: 910-343-3880



Thank you!