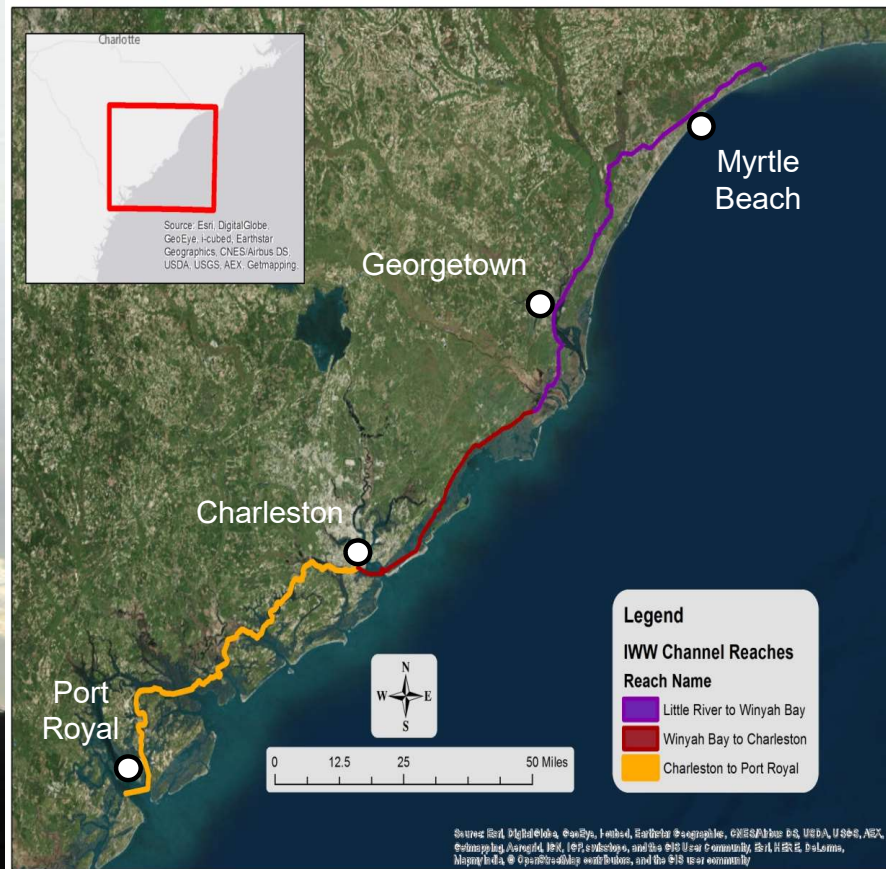


CHARLESTON DISTRICT

2023 AIWW Update



SAC AIWW OVERVIEW



- SC – AIWW is 235 miles long
- Charleston District responsible for 210 miles
- Divided into 3 reaches:
 - Little River to Winyah Bay
 - Winyah Bay to Charleston Harbor
 - Charleston Harbor to Port Royal Sound
- 12ft Authorized Depth
- Charleston District Navigation Information:
<http://www.sac.usace.army.mil/Missions/Navigation/>



BUILDING STRONG®

FY24 Sediment Rehandling at Breach Inlet



LOCATION: Charleston County, South Carolina

SCOPE: Remove beach compatible sand from upland placement areas and place on adjacent beaches

DREDGE TYPE: Pipeline

PLACEMENT: Nearshore, Surf Zone

QUANTITY: 600,000 CY

DEPTH: 5-6 foot cut in upland placement area

ROM: \$5M - \$10M

BUSINESS TYPE: IFB - Restricted

ADVERTISE: November 2023

BID OPENING: December 2023

AWARD: January 2024

ISSUE NTP: January 2024

COMMENCE DREDGING: February 2024

DREDGE COMPLETE: June 2024



BUILDING STRONG®

FY 23 SAC AIWW HIGHLIGHTS

- Completed Placement Area Maintenance AIWW Charleston to Port Royal
 - Performing maintenance efforts at 9 placement area sites
- Started Construction Placement Area Maintenance AIWW Georgetown to Charleston
 - Performing dike raising efforts at 7 placement area sites
- Completed Dredging AIWW Charleston to Port Royal
 - Dredged 3 Locations
 - Combined contract with SAS to save \$1M on AIWW



BUILDING STRONG®

SAC SUCCESSES/CHALLENGES

Successes

- AIWW Investment in SC - Dredging & Diking Contracts (\$25M)
- 99% Complete AIWW EA
- Partnership with SAJ Heavy Equipment Team
- Exploring Beneficial Use of Dredged Material Opportunities

Challenges

- Cost/Contractor availability for Placement Area contracts



BUILDING STRONG®

SAC FUTURE INITIATIVES

Beneficial Use of Dredged Material Opportunities

- Placing Sand on Adjacent Beach from Breach Inlet
- Thin Layer Placement at strategic locations on AIWW
- Marsh Habitat at Bulls Bay

Participants in ongoing BU Initiatives

- Manomet – Southeast BU & Coastal Habitat Study
- Cape Romain/Audubon – Habitat Enhancement
- Sea Grant – Thin Layer Placement



BUILDING STRONG®